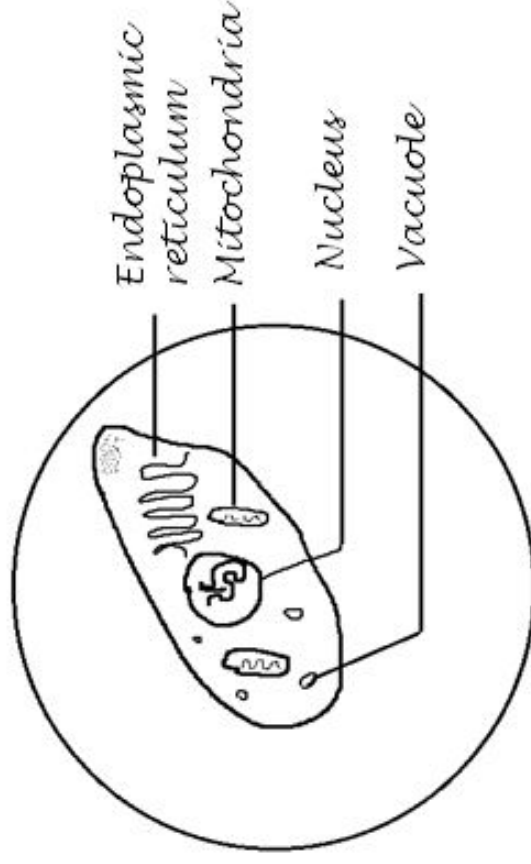


Biological Drawing Rules

- Drawing is neat and LARGE. Must take up most of the paper
- Diagram is drawn in pencil and "coloured" using stipples (little dots)
- All diagram labels are printed to the right of the drawing and are lined up in a straight line
- Name and date are written in the upper right hand corner of the diagram
- An appropriate title is given to the diagram
- Lines between label and feature are drawn using a ruler
- Lines do not cross
- Calculations and qualitative observations are included at the bottom of the diagram

Mr. Kass
September 9, 2011

Amoeba



M = ocular \times objective
M = (10X) \times (40X)
M = 400X

- Specimen was transparent.
- Nucleus appeared to be a pink/purple colour