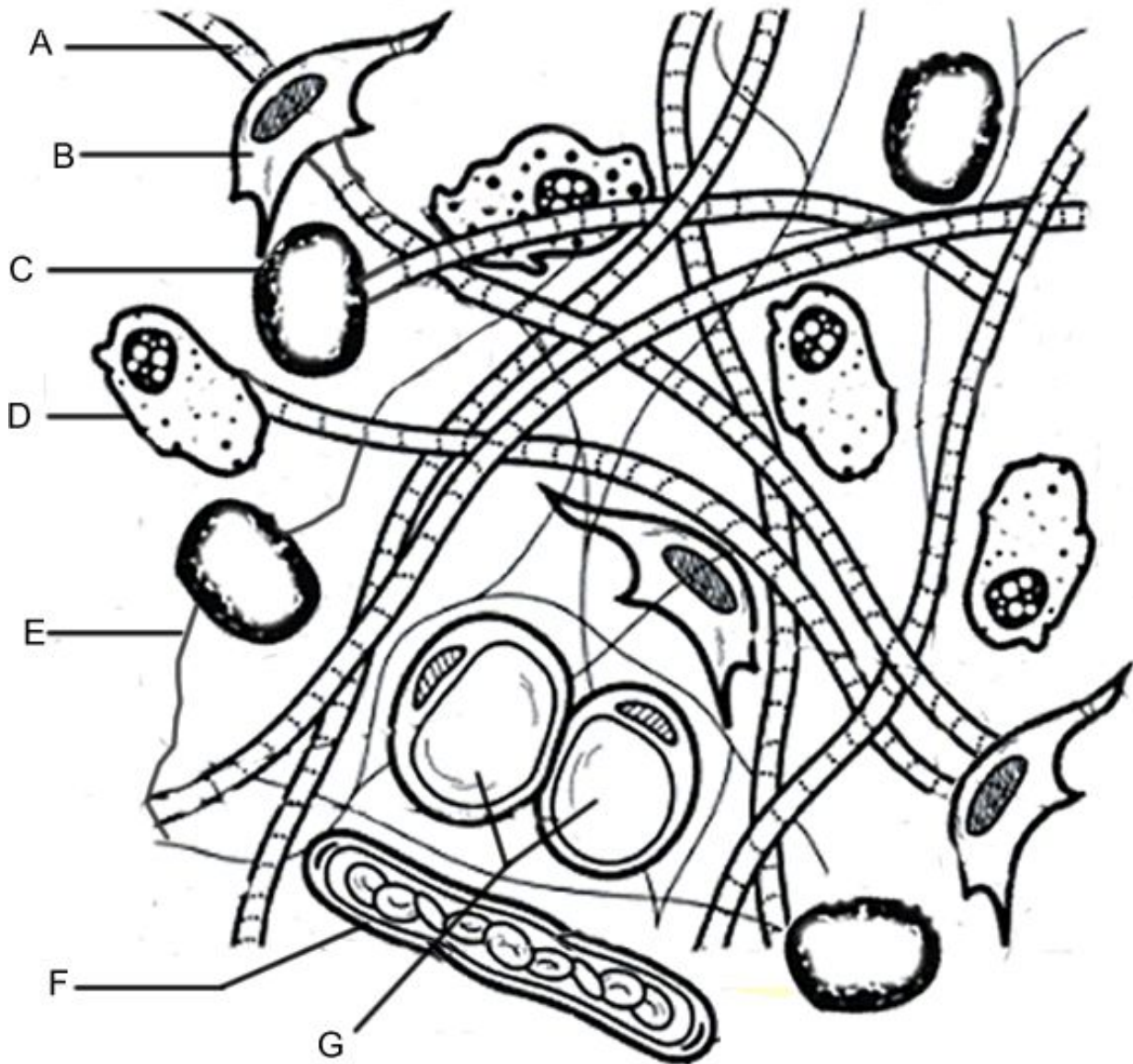


CONNECTIVE TISSUE MATRIX

Name _____



Coloring Instructions - Color each according to the key below, then label each cell on the diagram.

- collagen fibers [A] yellow.
- fibroblasts [B] blue.
- mast cells [C] purple .
- macrophages [D] orange
- elastic fibers [E] green (shade over the line)
- blood vessel and blood cells [F] red.
- fat cells [G] pink.

Match the structure to its function:

1. _____ Store Energy
2. _____ Production of fibers
3. _____ Consumes debris and foreign objects
4. _____ Fiber that makes up tendons
5. _____ Prevention of blood clots